



MONTHLY MEMBERSHIP PROGRESS REPORT

District 2 S3

Results as of: 09/30/2017

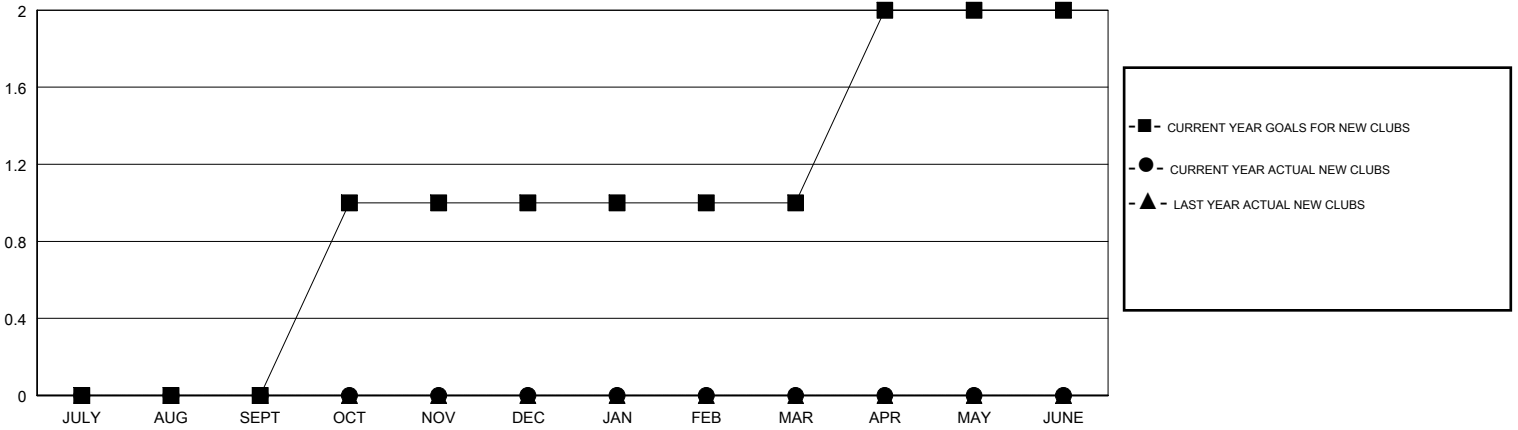
GMT: JOE AL PICONE

LOCATION TEXAS

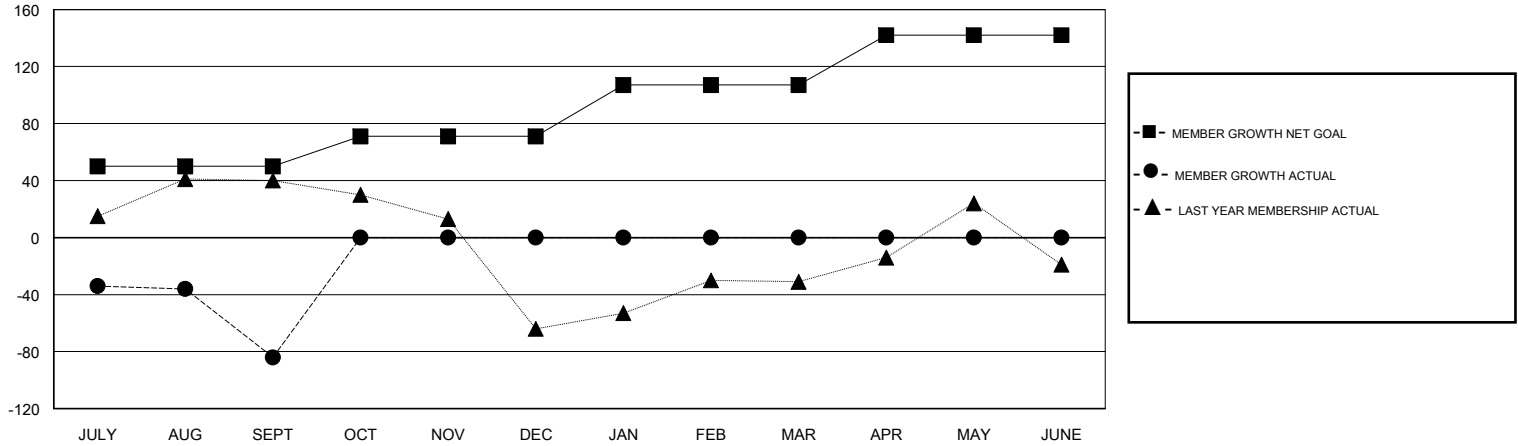
GMT CA

Clubs				Members			
RESULTS FOR 2017-2018				RESULTS FOR 2017-2018			
QUARTER	NEW CLUB GOAL	NEW CLUBS	DROPPED CLUBS	QUARTER	MEMBER GROWTH NET GOAL	MEMBER GROWTH ACTUAL	DROPPED MEMBERS ACTUAL (including transfers)
JULY/AUG/SEPT	0	0	0	JULY/AUG/SEPT	50	38	122
OCT/NOV/DEC	1	0	0	OCT/NOV/DEC	21	0	0
JAN/FEB/MAR	0	0	0	JAN/FEB/MAR	36	0	0
APR/MAY/JUNE	1	0	0	APR/MAY/JUNE	35	0	0

GOALS AND ACTUAL NEW CLUBS CUMULATIVE



GOALS AND ACTUAL MEMBERS CUMULATIVE



DROPPED CLUBS: 0	17 CLUBS OF 52 ADDED 1 OR MORE NEW MEMBERS	<u>GENDER DISTRIBUTION</u> MALE 1,221 (64.64%) FEMALE 668 (35.36%) Women Percentage Fiscal Year Goal: 36%
<u>DROPPED MEMBERS</u> DECEASED 8 CLUB CANCELLED 0 OTHER 114 TOTAL 122	CLICK HERE FOR CUMULATIVE MEMBERSHIP DATA	TOTAL FAMILY UNIT MEMBERS 318 FAMILY MEMBERS PAYING HALF DUES 161